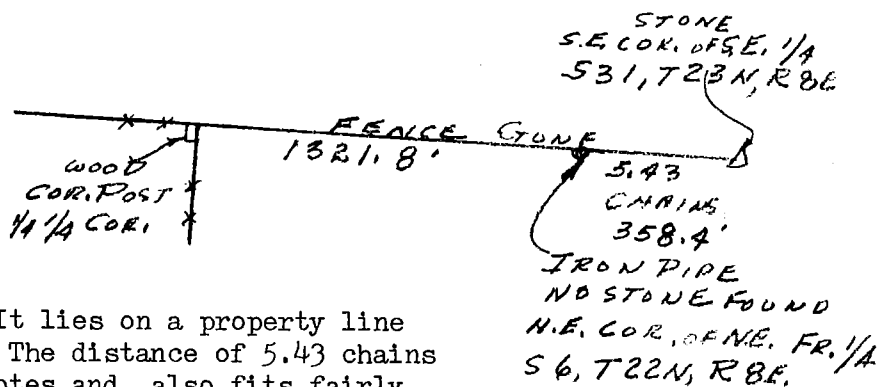
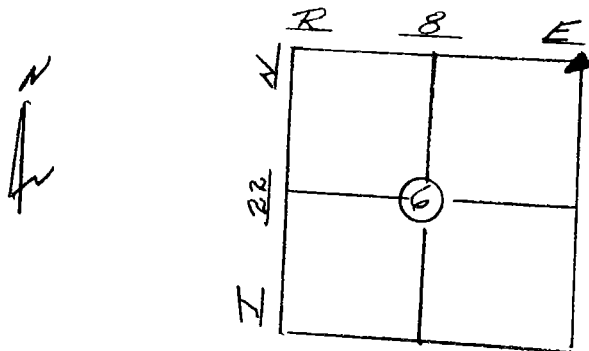


CORNER STONE REFERENCES

Feb. 9, 1986
Joe H. Bennett
8840 So. 100E.
Fairmount, Ind.
46928

A-5



I set this pipe in 1980. It lies on a property line between 2 cultivated fields. The distance of 5.43 chains agrees with the old survey notes and also fits fairly well with the south bound fence on the quarter-quarter line. J. H. B.

SEAL

I, Joe H. Bennett, a registered land surveyor in the State of Indiana, do hereby certify that I did set a pipe at the location shown above and that to the best of my knowledge and belief the distances shown are true and correct.

Joe H. Bennett

Joe H. Bennett
Cert. No. S0118

